


Human GM-CSF protein

Cat #: PRP1016

Size: 5 µg/20 µg/100 µg/1 mg

Product Information

	Product Name: Human GM-CSF protein		
REF	Catalog Number: PRP1016	LOT	Lot Number: Refer to product label
	Purity: >98 % as determined by SDS-PAGE		
	Storage: Store at -20C		Preparation method: <i>E. coli</i>
	Shipping: The product is shipped at below ambient temperature.		

Background: Granulocyte-macrophage colony-stimulating factor (GM-CSF) is a cytokine that stimulates the growth and differentiation of hematopoietic precursor cells from various lineages, including granulocytes, macrophages, eosinophils and erythrocytes. GM-CSF is used therapeutically in myeloid reconstitution following bone marrow transplant, bone marrow transplant engraftment failure or delay, mobilization and following transplantation of autologous peripheral blood progenitor cells, and following induction chemotherapy in older adults with acute myelogenous leukemia (AML).

Sequence: Amino acid sequence derived from human GM-CSF isoform (P04141-1) (Ala18-Glu144) was expressed.

Protein length: The recombinant human GM-CSF consists of 128 amino acids and has a predicted molecular mass of 14 kDa.

Biological Activity: Measured in a cell proliferation assay using TF-1 human erythroleukemia cells. The ED50 for this effect is 0.05-0.5 ng/mL.

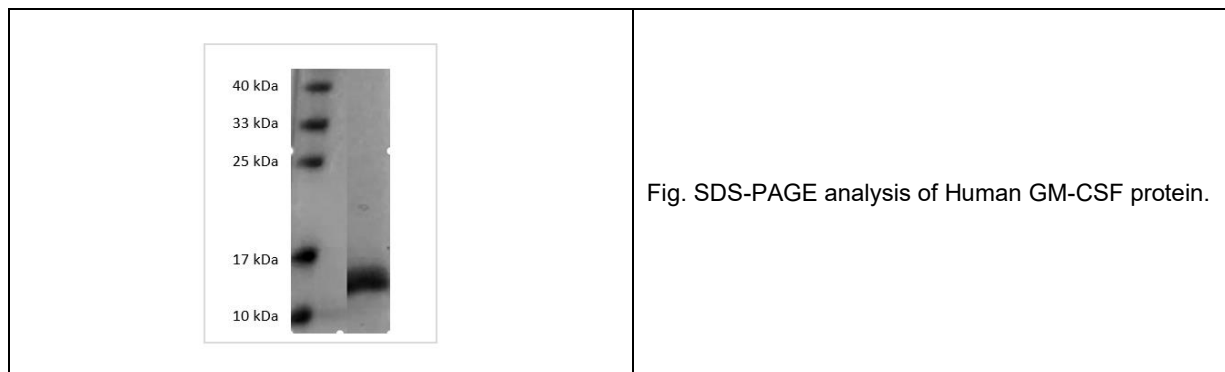
Endotoxin: < 0.01 EU per µg of the protein as determined by the LAL method.

Formulation: Lyophilized from sterile PBS, pH 7.4.

Storage Instructions: Lyophilized Human GM-CSF protein product should be stored desiccated below -20C. Upon reconstitution, the protein should be stored at 4C between 2 -7 days and for future use below -20C. For long term storage it is recommended to add a carrier protein (0.1% HSA or BSA). Please prevent freeze-thaw cycles.

Usage notes: Always centrifuge tubes before opening. It is recommended to reconstitute the lyophilized Human GM-CSF

protein using the buffer we provided not less than 100 µg/ml, which can then be further diluted to other aqueous solutions.



Note: The product listed herein is for research use only and is not intended for use in human or clinical diagnosis. Suggested applications of our products are not recommendations to use our products in violation of any patent or as a license. We cannot be responsible for patent infringements or other violations that may occur with the use of this product.